

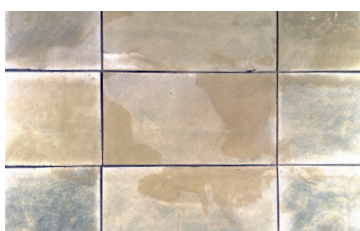
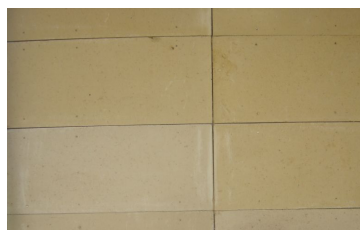
# Fixing Panel Wall System (patent pending)



The Fixing Panel Wall System is Timbercrete's revolutionary new system that is a drop-in replacement for brick veneer or weatherboard style construction.



Fixing Panel



The new fixing panel comes in two standard sizes:

	Standard Panel Size	Half Panel Size
Size	900mm (l) x 300mm (h) x 60mm (d)	600mm (l) x 300mm (h) x 60mm (d)‡
Weight	16.25kg each (60kg/m <sup>2</sup> )†	10.8kg each (60kg/m <sup>2</sup> )
Coverage	3.7 panels per m <sup>2</sup>	5.5 panels per m <sup>2</sup>

† A standard clay fired brick wall typically weighs 190kg/m<sup>2</sup> at 110mm thick

‡ The half panel is not a true half creating a beautiful staggered joint pattern

## Optional Sizes

Timbercrete prides itself on being Australia's most versatile brick, block, paver and panel manufacturer. Talk to your local licensed Timbercrete manufacturer and you may be pleasantly surprised that you can specify your own panel size and shape (some limitations apply). If we don't have the size and shape you need perhaps we can tailor make a panel to suit your specific requirements. A small additional cost will be charged for specialty mould manufacturing.

## Beautifully Unique Appearance

Colour possibilities are almost limitless, with subtle or pronounced colour variation that is typical of sandstone. A stacked joint pattern creates a clean-line monolithic look, whereas the staggered joint gives the appearance of large dry stack diamond cut sandstone.

## Flexibility

Each panel has a thin (4mm) flexible mortar bed to create a watertight/airtight joint. Some of our local Timbercrete manufacturers produce these panels with a stepped ship lap style profile top and bottom.

Our purpose-built galvanised metal bracket follows the contour of the panel's top step. Each bracket is secured to the stud with a counter sunk self tapping screw.

By using a flexible glue compound for mortar, such as "Sikaflex" control joint filler, each panel is allowed to flex slightly, acting as a control joint. "Sikaflex" is usually available from your local Timbercrete manufacturer.

To maximise the flexible nature of this wall system the panels need to be fixed directly to the stud frame. Steel frames are ideal in this situation because the panels can be fixed with screws through the back of the steel frame and into the panel. With timber frames you will need to select panels with a ship lap step. In this situation we have a purpose-built bracket to secure the panel to the timber frame.

Sisalation is sandwiched between the back of the panel and the face of the stud and is put in place before the panels are fixed.

# Fixing Panel Wall System cont.

## The Tiling Method

Timbercrete fixing panels can also be glued directly to fibro sheeting such as Hardy-flex or Blue Board. After applying the wall sheeting simply choose an external grade tile adhesive and glue the fixing panel directly to the sheet. No need to worry about gapping the panels as you do with typical wall tiles, just simply rest each panel against the next one.

The slightly tapered design of the panels will create a beautiful shadow line approximately 4 mm wide. There is no need to waste time and money to grout the panels. In this situation the wall sheet will provide the necessary waterproof barrier.

## Cost-Effective

Regardless of which fixing method you choose one thing is certain, Timbercrete fixing panels are far more cost-effective per square metre than a standard brick veneer style of structure. To begin with there are significant savings on footings and foundations followed by savings on the product and installation of the product.

## A Durable Finish

Regardless of how you choose to fix our panels the end result will be a no maintenance highly durable and long lasting wall finish. Even at only 60mm thick, Timbercrete fixing panels are shock resistant and even bullet-proof against most weapons.

## Solving a Common Masonry Problem

The Achilles heel of all masonry structures is their rigidity and weight. This rigidity often manifests itself in cracking, especially when there is movement in the soil as a result of changing weather conditions called “dishing and doming”. This calls for heavily reinforced and thickened slabs and footings leading to significant expense.

Timbercrete has addressed this issue by offering the market the first ever lightweight yet flexible masonry wall system. Due to the fact that the panels are lighter and all joints are semi flexible, the footing and foundations should conform to the size and standard that is typical for a timber frame and weatherboard style structure.

The flexible lightweight nature of this system should make it an ideal choice for building in mine subsidence areas or those prone to earthquakes.

Because the panels butt up against each other, they do not load-bear on the frame, nor do they load bear on the wall sheeting but on the footings, slab, or on a timber face plate called a “wailing plate”, or on bearer and piers with suspended timber floors.

## Building Made Fast and Easy

This simple to install wall panel system, will do away with the problems associated with bricklaying. It is significantly faster to erect and can easily be installed by any tradesmen or handyman.



FIXING PANEL WALL SYSTEM  
[www.timbercrete.com.au](http://www.timbercrete.com.au)